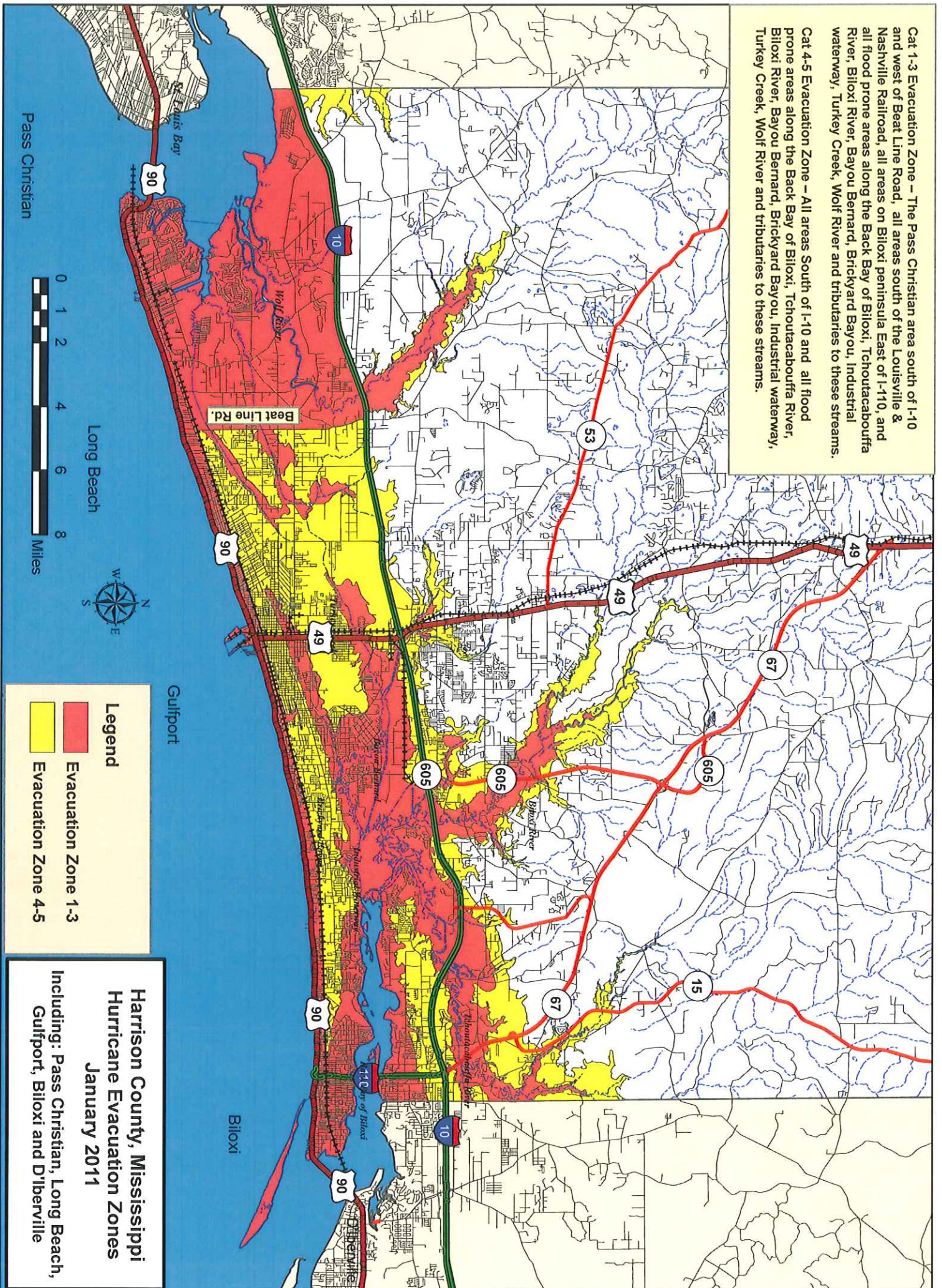


Cat 1-3 Evacuation Zone – The Pass Christian area south of I-10 and west of Beat Line Road, all areas south of the Louisville & Nashville Railroad, all areas on Biloxi peninsula East of I-10, and all flood prone areas along the Back Bay of Biloxi, Tchoutacabouffa River, Biloxi River, Bayou Bernard, Brickyard Bayou, Industrial waterway, Turkey Creek, Wolf River and tributaries to these streams.

Cat 4-5 Evacuation Zone – All areas South of I-10 and all flood prone areas along the Back Bay of Biloxi, Tchoutacabouffa River, Biloxi River, Bayou Bernard, Brickyard Bayou, Industrial waterway, Turkey Creek, Wolf River and tributaries to these streams.



Legend

- Evacuation Zone 1-3
- Evacuation Zone 4-5

**Harrison County, Mississippi
Hurricane Evacuation Zones
January 2011**

Including: Pass Christian, Long Beach,
Gulfport, Biloxi and D'Iberville